

Marktäcke Nedladdning v1.0 - teknisk beskrivning



Dokumentversion 1.0

Gränssnittsdefinition

Åtkomstpunkt

Atomflöde Produktion	https://api.lantmateriet.se/marktacke/atom/v1
Atomflöde Verifiering	https://api-ver.lantmateriet.se/marktacke/atom/v1

Inspire

Information

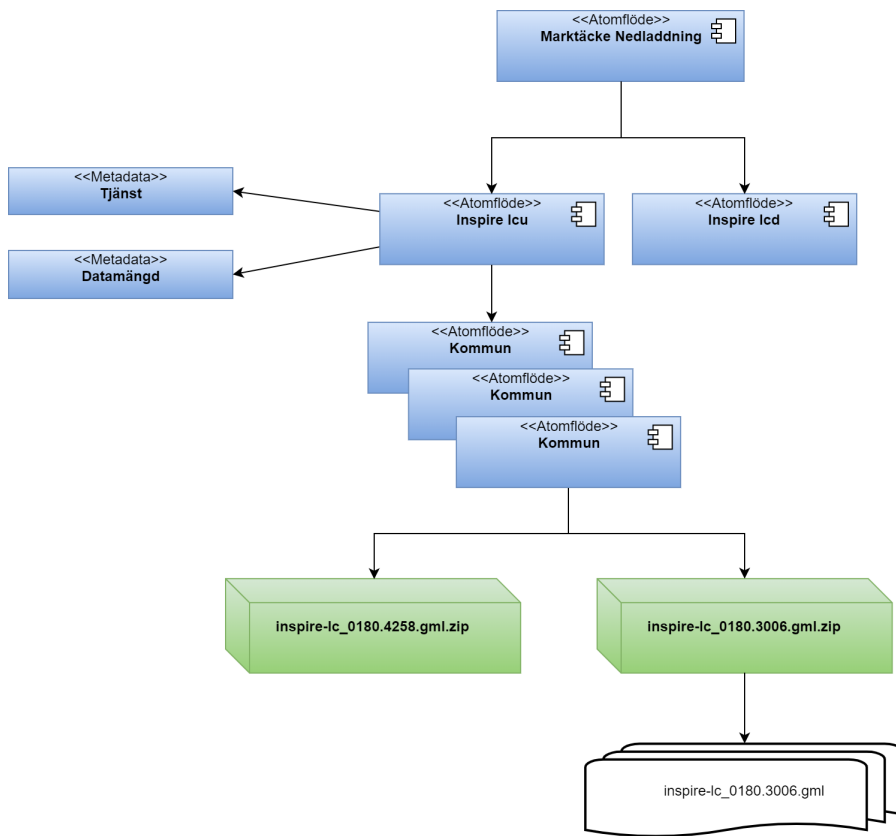
Inspire Land Cover	https://inspire.ec.europa.eu/id/document/tg/lc
Inspire tekniska riktlinjer	http://inspire.jrc.ec.europa.eu/documents/Network_Services/Technical_Guidance_Download_Services_v3.1.pdf

Schema

Inspire Land Cover Vector	http://inspire.ec.europa.eu/schemas/lcv/4.0/LandCoverVector.xsd
---------------------------	---

Atomflöde

Logisk struktur



Exempel

Atomflöde för tema, Inspire Land Cover Unit

Exempel

```
<?xml version="1.0" encoding="UTF-8"?>
<feed xmlns:georss="http://www.georss.org/georss" xmlns="http://www.w3.org/2005/Atom" xmlns:inspire_dls="
http://inspire.ec.europa.eu/schemas/inspire_dls/1.0" xml:lang="sv">
  <id>https://api.lantmateriet.se/marktacke/atom/v1/inspire/lcu</id>
  <title>Inspire Land Cover Unit</title>
  <subtitle>Fördefinierade datamängder för Inspire Land Cover Unit</subtitle>
  <updated>2019-11-29T08:43:25+01:00</updated>
  <link href="https://api.lantmateriet.se/marktacke/atom/v1/inspire/lcu" rel="self" type="application
/atom+xml" hreflang="sv" title="Detta dokument" />
  <link href="https://www.geodata.se/geodataportalen/srv/swe/csw-inspire?
request=GetRecordById&service=CSW&version=2.0.2&elementSetName=full&id=675a56b5-ac77-4eb0-980c-
ecd4b0b7e462&outputSchema=csw:IsoRecord" rel="describedby" type="application/vnd.iso.19139+xml" hreflang="sv"
title="Metadata, nedladdningstjänst för Inspire Land Cover Unit" />
  <link href="https://www.geodata.se/geodataportalen/GetMetaDataById?id=675a56b5-ac77-4eb0-980c-ecd4b0b7e462"
rel="alternate" type="text/html" hreflang="sv" title="Metadata, nedladdningstjänst för Inspire Land Cover Unit
(HTML)" />
  <rights>
    Produkten omfattas av upphovsrätt. Avtal för användning krävs, avgifter för användning tas ut.
  </rights>
  <author>
    <name>Geodatasupport</name>
    <email>geodatasupport@lm.se</email>
  </author>
  <entry>
    <id>https://api.lantmateriet.se/marktacke/atom/v1/inspire/lcu/0114</id>
    <title>Inspire Land Cover Unit, Upplands väsby (0114)</title>
    <summary>Fördefinierad datamängd Inspire Land Cover Unit, Upplands väsby (0114)</summary>
    <updated>2019-11-26T18:06:18+01:00</updated>
    <inspire_dls:spatial_dataset_identifier_code>0114</inspire_dls:spatial_dataset_identifier_code>
    <inspire_dls:spatial_dataset_identifier_namespace>SE.LM.LC</inspire_dls:
spatial_dataset_identifier_namespace>
    <link href="https://api.lantmateriet.se/marktacke/atom/v1/inspire/lcu/0114" rel="alternate" type="
application/atom+xml" hreflang="sv" title="Inspire Land Cover Unit, Upplands väsby (0114)" />
    <link href="https://www.geodata.se/geodataportalen/srv/swe/csw-inspire?
request=GetRecordById&service=CSW&version=2.0.2&elementSetName=full&id=3542ba2c-db3e-409b-b357-
723864763373&outputSchema=csw:IsoRecord" rel="describedby" type="application/vnd.iso.19139+xml" hreflang="sv"
title="Metadata för datamängden Inspire Land Cover Unit" />
    <link href="https://www.geodata.se/geodataportalen/GetMetaDataById?id=3542ba2c-db3e-409b-b357-
723864763373" rel="alternate" type="text/html" hreflang="sv" title="Metadata för datamängden Inspire Land Cover
Unit (HTML)" />
    <category term="http://www.opengis.net/def/crs/EPSS/0/3006" label="SWEREF99 TM" />
    <category term="http://www.opengis.net/def/crs/EPSS/0/4258" label="ETRS89" />
    <georss:polygon>
      17.799253161678266 59.457316999390194 17.799253161678266 59.575556785260815 18.0145254758554
59.575556785260815 18.0145254758554 59.457316999390194 17.799253161678266 59.457316999390194
    </georss:polygon>
  </entry>
  ...
</feed>
```

Atomflöde för datamängd (Stockholms kommun), Inspire Land Cover Unit

Exempel

```
<feed xmlns:georss="http://www.georss.org/georss" xmlns="http://www.w3.org/2005/Atom" xmlns:inspire_dls="
http://inspire.ec.europa.eu/schemas/inspire_dls/1.0" xml:lang="sv">
  <id>https://api.lantmateriet.se/marktacke/atom/v1/inspire/lcu/0180</id>
  <title>Fördefinierad datamängd Inspire Land Cover Unit, Stockholm (0180)</title>
  <subtitle>Fördefinierad datamängd i olika referenssystem och format</subtitle>
  <updated>2019-11-26T17:48:17+01:00</updated>
  <link href="https://api.lantmateriet.se/marktacke/atom/v1/inspire/lcu/0180" rel="self" type="application
/atom+xml" hreflang="sv" title="Detta dokument" />
  <link href="https://api.lantmateriet.se/marktacke/atom/v1/inspire/lcu" rel="up" type="application/atom+xml"
hreflang="sv" title="Inspire Land Cover Unit" />
  <link href="http://inspire.ec.europa.eu/featureconcept/LandCoverUnit/" rel="describedby" type="text/html"
title="Featurtype Land Cover Unit" />
  <rights>
    Produkten omfattas av upphovsrätt. Avtal för användning krävs, avgifter för användning tas ut.
  </rights>
  <author>
    <name>Geodatasupport</name>
    <email>geodatasupport@lm.se</email>
  </author>
  <entry>
    <id>
      https://api.lantmateriet.se/marktacke/atom/v1/inspire/lcu/0180/dataset?srs=3006&format=application/zip
    </id>
    <title>Inspire Land Cover Unit, Stockholm (0180) [EPSG:3006, GML]</title>
    <updated>2019-11-26T16:50:32+01:00</updated>
    <link href="https://api.lantmateriet.se/marktacke/atom/v1/inspire/lcu/0180/dataset?
srs=3006&format=application/zip" rel="alternate" type="application/zip" hreflang="sv" title="inspire-lc_0180.
3006.gml.zip" length="2030770" />
    <category term="http://www.opengis.net/def/crs/EPSG/0/3006" label="SWEREF99 TM" />
  </entry>
  <entry>
    <id>
      https://api.lantmateriet.se/marktacke/atom/v1/inspire/lcu/0180/dataset?srs=4258&format=application/zip
    </id>
    <title>Inspire Land Cover Unit, Stockholm (0180) [EPSG:4258, GML]</title>
    <updated>2019-11-26T17:48:17+01:00</updated>
    <link href="https://api.lantmateriet.se/marktacke/atom/v1/inspire/lcu/0180/dataset?
srs=4258&format=application/zip" rel="alternate" type="application/zip" hreflang="sv" title="inspire-lc_0180.
4258.gml.zip" length="358572" />
    <category term="http://www.opengis.net/def/crs/EPSG/0/4258" label="ETRS89" />
  </entry>
</feed>
```

Datamängd GML (Stockholms kommun), Inspire Land Cover Unit

Exempel

```
<?xml version="1.0" encoding="UTF-8"?>
<wfs:FeatureCollection xmlns:fes="http://www.opengis.net/fes/2.0" xmlns:xsi="http://www.w3.org/2001/XMLSchema-
instance" xmlns:ows="http://www.opengis.net/ows/1.1" xmlns:gml="http://www.opengis.net/gml/3.2" xmlns:wfs="
http://www.opengis.net/wfs/2.0" xsi:schemaLocation="http://www.opengis.net/wfs/2.0 http://schemas.opengis.net
/wfs/2.0/wfs.xsd http://www.opengis.net/gml/3.2 http://schemas.opengis.net/gml/3.2.1/gml.xsd" timeStamp="2019-
11-29T12:20:34.486792988+01:00" numberMatched="3229" numberReturned="3229">
  <wfs:boundedBy>
    <gml:Envelope srsName="urn:ogc:def:crs:EPSG::3006">
      <gml:lowerCorner>657277.829 6569761.094</gml:lowerCorner>
      <gml:upperCorner>682485.630 6592667.157</gml:upperCorner>
    </gml:Envelope>
  </wfs:boundedBy>
  <wfs:member>
    <lcw:LandCoverUnit xmlns:lcw="http://inspire.ec.europa.eu/schemas/lcw/4.0" gml:id="SE.LM.LC.LCU.
6a9c785b-825e-4e46-a9c5-ccb7153b21b">
      <lcw:inspireId>
        <base:Identifier xmlns:base="http://inspire.ec.europa.eu/schemas/base/3.3">
          <base:localId>6a9c785b-825e-4e46-a9c5-ccb7153b21b</base:localId>
          <base:namespace>SE.LM.LC.LCU</base:namespace>
          <base:versionId nilReason="http://inspire.ec.europa.eu/codelist/VoidReasonValue/Unknown"/>
        </base:Identifier>
      </lcw:inspireId>
      <lcw:beginLifespanVersion>2014-10-17T18:13:07+02:00</lcw:beginLifespanVersion>
      <lcw:endLifespanVersion>9999-12-31T23:59:59+01:00</lcw:endLifespanVersion>
      <lcw:geometry>
        <gml:MultiSurface xmlns:base="http://inspire.ec.europa.eu/schemas/base/3.3" gml:id="SE.LM.LC.
LCU.6a9c785b-825e-4e46-a9c5-ccb7153b21b_LCV_GEOMETRY" srsName="urn:ogc:def:crs:EPSG::3006" srsDimension="2">
          <gml:surfaceMember>
            <gml:Polygon gml:id="id-bfcdac1b-b541-4edc-9685-7ad90ff24ff0-1">
              <gml:exterior>
                <gml:LinearRing>
                  <gml:posList>...</gml:posList>
                </gml:LinearRing>
              </gml:exterior>
            </gml:Polygon>
          </gml:surfaceMember>
        </gml:MultiSurface>
      </lcw:geometry>
      <lcw:landCoverObservation>
        <lcw:LandCoverObservation>
          <lcw:class xmlns:xlink="http://www.w3.org/1999/xlink" xlink:href="http://www.
locationframework.eu/codelist/LandCoverClassValue/natural material surface"/>
          <lcw:mosaic>
            <lcw:LandCoverValue>
              <lcw:class nilReason="http://inspire.ec.europa.eu/codelist/VoidReasonValue/Unknown"
/>
            </lcw:LandCoverValue>
            <lcw:coveredPercentage xsi:nil="true" nilReason="http://inspire.ec.europa.eu
/codelist/VoidReasonValue/Unknown"/>
          </lcw:LandCoverValue>
        </lcw:mosaic>
        <lcw:observationDate xsi:nil="true" nilReason="http://inspire.ec.europa.eu/codelist
/VoidReasonValue/Unknown"/>
      </lcw:LandCoverObservation>
    </lcw:landCoverObservation>
  </lcw:LandCoverUnit>
</wfs:member>
  ...
</wfs:FeatureCollection>
```