

# Administrativ indelning Nedladdning, Inspire v1.1 - teknisk beskrivning



Dokumentversion 1.1

## Gränssnittsdefinition

### Åtkomstpunkt

Atomflöde Produktion	<a href="https://api.lantmateriet.se/administrativindelning/atom/v1.1/">https://api.lantmateriet.se/administrativindelning/atom/v1.1/</a>
Atomflöde Verifiering	<a href="https://api-ver.lantmateriet.se/administrativindelning/atom/v1.1/">https://api-ver.lantmateriet.se/administrativindelning/atom/v1.1/</a>

## Inspire

### Information

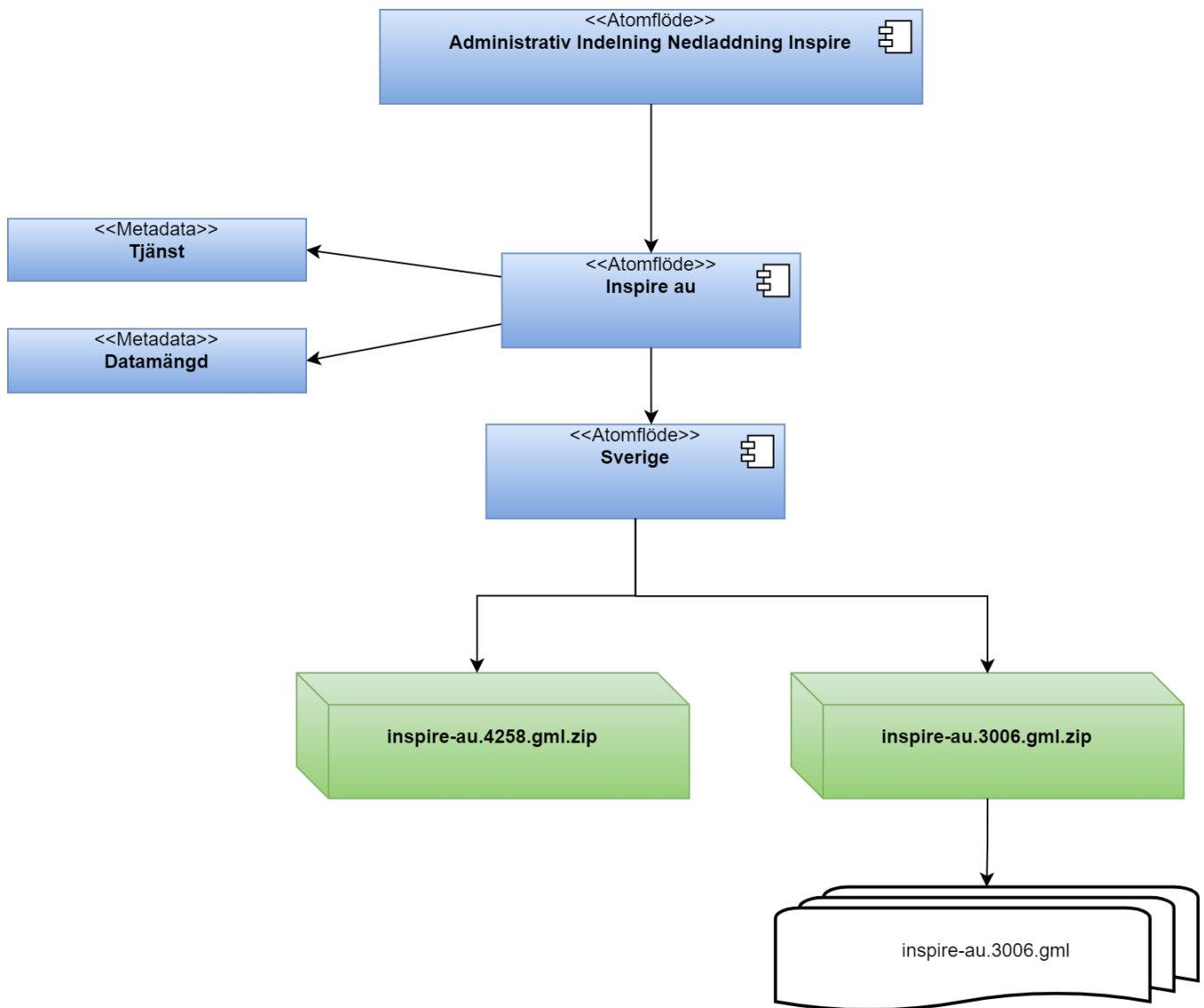
Inspire Administrative Unit	<a href="https://inspire.ec.europa.eu/id/document/tg/au">https://inspire.ec.europa.eu/id/document/tg/au</a>
Inspire tekniska riktlinjer	<a href="http://inspire.jrc.ec.europa.eu/documents/Network_Services/Technical_Guidance_Download_Services_v3.1.pdf">http://inspire.jrc.ec.europa.eu/documents/Network_Services/Technical_Guidance_Download_Services_v3.1.pdf</a>

### Schema

Inspire Administrative Unit	<a href="http://inspire.ec.europa.eu/schemas/au/4.0/AdministrativeUnits.xsd">http://inspire.ec.europa.eu/schemas/au/4.0/AdministrativeUnits.xsd</a>
-----------------------------	---

## Atomflöde

### Logisk struktur



## Exempel

Atomflöde för tema, Inspire Administrative Unit

## Exempel

```
<?xml version="1.0" encoding="UTF-8"?>
<feed xmlns:georss="http://www.georss.org/georss" xmlns="http://www.w3.org/2005/Atom" xmlns:inspire_dls="
http://inspire.ec.europa.eu/schemas/inspire_dls/1.0" xml:lang="sv">
  <id>https://api.lantmateriet.se/administrativindelning/atom/v1.1/inspire/au</id>
  <title>Inspire Administrative Units</title>
  <subtitle>Fördefinierade datamängder för Inspire Administrative Units</subtitle>
  <updated>2021-10-22T15:30:09+02:00</updated>
  <link href="https://api.lantmateriet.se/administrativindelning/atom/v1.1/inspire/au" rel="self" type="
application/atom+xml" hreflang="sv" title="Detta dokument"/>
  <link href="https://www.geodata.se/geodataportalen/srv/swe/csw-inspire?
request=GetRecordById&service=CSW&version=2.0.2&elementSetName=full&id=6cfd51fa-3b38-4c96-9849-
3764ee7a703f&outputSchema=csw:IsoRecord" rel="describedby" type="application/xml" hreflang="sv" title="
Metadata, nedladdningstjänst för Inspire Administrative Units"/>
  <link href="https://www.geodata.se/geodataportalen/GetMetaDataById?id=6cfd51fa-3b38-4c96-9849-3764ee7a703f"
rel="describedby" type="text/html" hreflang="sv" title="Metadata, nedladdningstjänst för Inspire Administrative
Units (HTML)"/>
  <link href="https://www.geodata.se/geodataportalen/opensearch/swe/6cfd51fa-3b38-4c96-9849-3764ee7a703f
/OpenSearchDescription.xml" rel="search" type="application/opensearchdescription+xml" hreflang="sv" title="
Opensearch-dokument för Inspireanpassad nedladdningstjänst"/>
  <rights>Produkten omfattas av upphovsrätt. Avtal för användning krävs, avgifter för användning tas ut.<
/rights>
  <author>
    <name>Geodatasupport</name>
    <email>geodatasupport@lm.se</email>
  </author>
  <entry>
    <id>https://api.lantmateriet.se/administrativindelning/atom/v1.1/inspire/au/sverige</id>
    <title>Inspire Administrative Units, Sverige (sverige)</title>
    <summary>Fördefinierad datamängd Inspire Administrative Units, Sverige (sverige)</summary>
    <updated>2021-10-22T15:30:09+02:00</updated>
    <inspire_dls:spatial_dataset_identifier_code>5133f778-432d-46e9-bd13-e2caff4cfe78</inspire_dls:
spatial_dataset_identifier_code>
    <inspire_dls:spatial_dataset_identifier_namespace>SE.LM.AU.sverige</inspire_dls:
spatial_dataset_identifier_namespace>
    <link href="https://api.lantmateriet.se/administrativindelning/atom/v1.1/inspire/au/sverige" rel="
alternate" type="application/atom+xml" hreflang="sv" title="Inspire Administrative Units, Sverige (sverige)"/>
    <link href="https://www.geodata.se/geodataportalen/srv/swe/csw-inspire?
request=GetRecordById&service=CSW&version=2.0.2&elementSetName=full&id=1f185d81-c699-48e3-9ada-
c9e1ae297557&outputSchema=csw:IsoRecord" rel="describedby" type="application/xml" hreflang="sv" title="Metadata
för datamängden Inspire Administrative Units"/>
    <link href="https://www.geodata.se/geodataportalen/GetMetaDataById?id=1f185d81-c699-48e3-9ada-
c9e1ae297557" rel="describedby" type="text/html" hreflang="sv" title="Metadata för datamängden Inspire
Administrative Units (HTML)"/>
    <category term="http://www.opengis.net/def/crs/EPSS/0/3006" label="SWEREF99 TM"/>
    <category term="http://www.opengis.net/def/crs/EPSS/0/4258" label="ETRS89"/>
    <georss:polygon>10.41511815796339 54.060679728263736 6.319178214322216 71.90510855755623
29.28568567442299 71.56574032948714 22.617608907651288 53.90610084056238 10.41511815796339 54.060679728263736<
/georss:polygon>
  </entry>
</feed>
```

Atomflöde för datamängd, Inspire Administrative Unit

## Exempel

```
<?xml version="1.0" encoding="UTF-8"?>
<feed xmlns:georss="http://www.georss.org/georss" xmlns="http://www.w3.org/2005/Atom" xmlns:inspire_dls="
http://inspire.ec.europa.eu/schemas/inspire_dls/1.0" xml:lang="sv">
  <id>https://api.lantmateriet.se/administrativindelning/atom/v1.1/inspire/au/sverige</id>
  <title>Fördefinierad datamängd Inspire Administrative Units, Sverige (sverige)</title>
  <subtitle>Fördefinierad datamängd i olika referenssystem och format</subtitle>
  <updated>2021-10-22T15:30:09+02:00</updated>
  <link href="https://api.lantmateriet.se/administrativindelning/atom/v1.1/inspire/au/sverige" rel="self"
type="application/atom+xml" hreflang="sv" title="Detta dokument"/>
  <link href="https://api.lantmateriet.se/administrativindelning/atom/v1.1/inspire/au" rel="up" type="
application/atom+xml" hreflang="sv" title="Inspire Administrative Units"/>
  <link href="http://inspire.ec.europa.eu/featureconcept/AdministrativeUnit" rel="describedby" type="text
/html" title="Featurtype Administrative Unit"/>
  <rights>Produkten omfattas av upphovsrätt. Avtal för användning krävs, avgifter för användning tas ut.<
/rights>
  <author>
    <name>Geodatasupport</name>
    <email>geodatasupport@lm.se</email>
  </author>
  <entry>
    <id>https://api.lantmateriet.se/administrativindelning/atom/v1.1/inspire/au/sverige/dataset?
srs=3006&format=application/zip</id>
    <title>Inspire Administrative Units, Sverige (sverige) [EPSG:3006, GML]</title>
    <updated>2021-10-22T15:29:11+02:00</updated>
    <link href="https://api.lantmateriet.se/administrativindelning/atom/v1.1/inspire/au/sverige/dataset?
srs=3006&format=application/zip" rel="alternate" type="application/zip" hreflang="sv" title="inspire-au.3006.
gml.zip" length="11016992"/>
    <category term="http://www.opengis.net/def/crs/EPSSG/0/3006" label="SWEREF99 TM"/>
  </entry>
  <entry>
    <id>https://api.lantmateriet.se/administrativindelning/atom/v1.1/inspire/au/sverige/dataset?
srs=4258&format=application/zip</id>
    <title>Inspire Administrative Units, Sverige (sverige) [EPSG:4258, GML]</title>
    <updated>2021-10-22T15:30:09+02:00</updated>
    <link href="https://api.lantmateriet.se/administrativindelning/atom/v1.1/inspire/au/sverige/dataset?
srs=4258&format=application/zip" rel="alternate" type="application/zip" hreflang="sv" title="inspire-au.4258.
gml.zip" length="18266880"/>
    <category term="http://www.opengis.net/def/crs/EPSSG/0/4258" label="ETRS89"/>
  </entry>
</feed>
```

## Datamängd GML, Inspire Administrative Unit

### Exempel

```
<?xml version="1.0" encoding="UTF-8"?>
<wfs:FeatureCollection xmlns:gmd="http://www.isotc211.org/2005/gmd" xmlns:gn="http://inspire.ec.europa.eu
/schemas/gn/4.0" xmlns:au="http://inspire.ec.europa.eu/schemas/au/4.0" xmlns:base="http://inspire.ec.europa.eu
/schemas/base/3.3" xmlns:gml="http://www.opengis.net/gml/3.2" xmlns:ows="http://www.opengis.net/ows/1.1" xmlns:
xlink="http://www.w3.org/1999/xlink" xmlns:wfs="http://www.opengis.net/wfs/2.0" xmlns:xsi="http://www.w3.org
/2001/XMLSchema-instance" xsi:schemaLocation="http://inspire.ec.europa.eu/schemas/au/4.0 http://inspire.ec.
europa.eu/schemas/au/4.0/AdministrativeUnits.xsd http://www.opengis.net/wfs/2.0 http://schemas.opengis.net/wfs
/2.0/wfs.xsd http://www.opengis.net/gml/3.2 http://schemas.opengis.net/gml/3.2.1/gml.xsd" timeStamp="2021-10-
22T15:28:31.269029715+02:00" numberMatched="2483" numberReturned="2483">
  <wfs:boundedBy>
    <gml:Envelope srsName="http://www.opengis.net/def/crs/EPSSG/0/3006">
      <gml:lowerCorner>6111268.599 245209.174</gml:lowerCorner>
      <gml:upperCorner>7671055.362 921177.358</gml:upperCorner>
    </gml:Envelope>
  </wfs:boundedBy>
  <wfs:member>
    <au:AdministrativeUnit gml:id="SE.LM.AU.AU.0000">
      <au:geometry>
        <gml:MultiSurface gml:id="SE.LM.AU.AU.0000_AU_GEOMETRY" srsName="http://www.
opengis.net/def/crs/EPSSG/0/3006" srsDimension="2">
```

```

        <gml:surfaceMember>
          <gml:Surface gml:id="id-d1bece5e-c362-45d3-9acb-cd3f6b935646-1">
            <gml:patches>
              <gml:PolygonPatch>
                <gml:exterior>
                  <gml:LinearRing>
                    <gml:posList>...</gml:
posList>
                    </gml:LinearRing>
                  </gml:exterior>
                </gml:PolygonPatch>
              </gml:patches>
            </gml:Surface>
          </gml:surfaceMember>
        <gml:surfaceMember>
          <gml:Surface gml:id="id-d1bece5e-c362-45d3-9acb-cd3f6b935646-2">
            <gml:patches>
              <gml:PolygonPatch>
                <gml:exterior>
                  <gml:LinearRing>
                    <gml:posList>...</gml:
posList>
                    </gml:LinearRing>
                  </gml:exterior>
                </gml:PolygonPatch>
              </gml:patches>
            </gml:Surface>
          </gml:surfaceMember>
        </gml:MultiSurface>
      </au:geometry>
      <au:nationalCode>0</au:nationalCode>
      <au:inspireId>
        <base:Identifier>
          <base:localId>0000</base:localId>
          <base:namespace>SE.LM.AU.AU</base:namespace>
        </base:Identifier>
      </au:inspireId>
      <au:nationalLevel xlink:href="http://inspire.ec.europa.eu/codelist
/AdministrativeHierarchyLevel/1stOrder"></au:nationalLevel>
      <au:nationalLevelName>
        <gmd:LocalisedCharacterString>Kungarike</gmd:LocalisedCharacterString>
      </au:nationalLevelName>
      <au:country>
        <gmd:Country codeList="http://inspire.ec.europa.eu/codelist/CountryCode/"
codeListValue="SE">SE</gmd:Country>
      </au:country>
      <au:name>
        <gn:GeographicalName>
          <gn:language>swe</gn:language>
          <gn:nativeness xlink:href="https://inspire.ec.europa.eu/codelist
/NativenessValue/endonym"></gn:nativeness>
          <gn:nameStatus xlink:href="https://inspire.ec.europa.eu/codelist
/NameStatusValue/official"></gn:nameStatus>
          <gn:sourceOfName xsi:nil="true" nilReason="http://inspire.ec.europa.eu
/codelist/VoidReasonValue/Unknown"></gn:sourceOfName>
          <gn:pronunciation xsi:nil="true" nilReason="http://inspire.ec.europa.eu
/codelist/VoidReasonValue/Unknown"></gn:pronunciation>
          <gn:spelling>
            <gn:SpellingOfName>
              <gn:text>Kungariket Sverige</gn:text>
              <gn:script>Latn</gn:script>
            </gn:SpellingOfName>
          </gn:spelling>
        </gn:GeographicalName>
      </au:name>
      <au:residenceOfAuthority>
        <au:ResidenceOfAuthority>
          <au:name>
            <gn:GeographicalName>
              <gn:language>swe</gn:language>
              <gn:nativeness xlink:href="http://inspire.ec.europa.eu

```

```

/codelist/NativenessValue/endonym"></gn:nativeness>
<gn:nameStatus xlink:href="http://inspire.ec.europa.eu
/codelist/NameStatusValue/official"></gn:nameStatus>
<gn:sourceOfName xsi:nil="true" nilReason="
http://inspire.ec.europa.eu/codelist/VoidReasonValue/Unknown"></gn:sourceOfName>
<gn:pronunciation xsi:nil="true" nilReason="
http://inspire.ec.europa.eu/codelist/VoidReasonValue/Unknown"></gn:pronunciation>
<gn:spelling>
  <gn:SpellingOfName>
    <gn:text>Stockholm</gn:text>
    <gn:script>Latn</gn:script>
  </gn:SpellingOfName>
</gn:spelling>
</gn:GeographicalName>
</au:name>
<au:geometry>
  <gml:Point gml:id="SE.LM.AU.AU.0000_AU_RESIDENCEOFAUTHORITY_0"
srsName="http://www.opengis.net/def/crs/EPSSG/0/3006">
    <gml:pos>...</gml:pos>
  </gml:Point>
</au:geometry>
</au:ResidenceOfAuthority>
</au:residenceOfAuthority>
<au:beginLifespanVersion>2021-08-20T00:00:00+02:00</au:beginLifespanVersion>
<au:lowerLevelUnit xlink:href="#SE.LM.AU.AU.1800"></au:lowerLevelUnit>
<au:lowerLevelUnit xlink:href="#SE.LM.AU.AU.1900"></au:lowerLevelUnit>
<au:boundary xlink:href="#SE.LM.AU.AB.14081"></au:boundary>
</au:AdministrativeUnit>
</wfs:member>
<wfs:member>
  <au:AdministrativeUnit gml:id="SE.LM.AU.AU.1800">
    ...
  </au:AdministrativeUnit>
</wfs:member>
<wfs:member>
  <au:AdministrativeBoundary gml:id="SE.LM.AU.AB.14081">
    <au:geometry>
      <gml:LineString gml:id="SE.LM.AU.AB.14081_AU_GEOMETRY" srsName="http://www.
opengis.net/def/crs/EPSSG/0/3006" srsDimension="2">
        <gml:posList>...</gml:posList>
      </gml:LineString>
    </au:geometry>
    <au:inspireId>
      <base:Identifier>
        <base:localId>14081</base:localId>
        <base:namespace>SE.LM.AU.AB</base:namespace>
      </base:Identifier>
    </au:inspireId>
    <au:country>
      <gmd:Country codeList="http://inspire.ec.europa.eu/codelist/CountryCode/"
codeListValue="SE">SE</gmd:Country>
    </au:country>
    <au:nationalLevel xlink:href="http://inspire.ec.europa.eu/codelist
/AdministrativeHierarchyLevel/3rdOrder"></au:nationalLevel>
    <au:nationalLevel xlink:href="http://inspire.ec.europa.eu/codelist
/AdministrativeHierarchyLevel/2ndOrder"></au:nationalLevel>
    <au:nationalLevel xlink:href="http://inspire.ec.europa.eu/codelist
/AdministrativeHierarchyLevel/1stOrder"></au:nationalLevel>
    <au:legalStatus>agreed</au:legalStatus>
    <au:technicalStatus>edgeMatched</au:technicalStatus>
    <au:beginLifespanVersion>2020-08-03T00:00:00+02:00</au:beginLifespanVersion>
    <au:admUnit xlink:href="#SE.LM.AU.AU.0000"></au:admUnit>
  </au:AdministrativeBoundary>
</wfs:member>
</wfs:FeatureCollection>

```